

## LOOM STAND ACCESSORY TRAYS

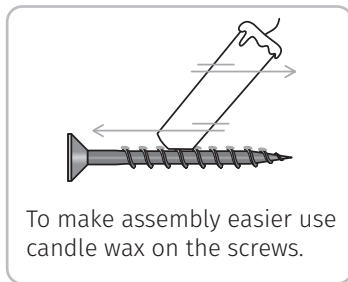
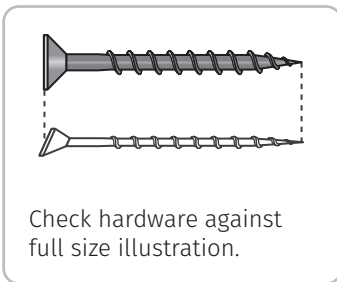
To fit Rigid Heddle, Samplelt and Knitters Loom Stands

### Before Assembly

Please read the instructions completely, identify the parts and note the assembly sequence. Use the sandpaper supplied to remove any sharp edges and corners on the natural timber trays.

We recommend that the natural wood surfaces be waxed or sealed before assembly. This protects the kiln dried wood from climatic changes and prevents it getting dirty or stained. For a silky-smooth matt finish, use Ashford Finishing Wax Polish to enhance the natural colours and character of this timber.

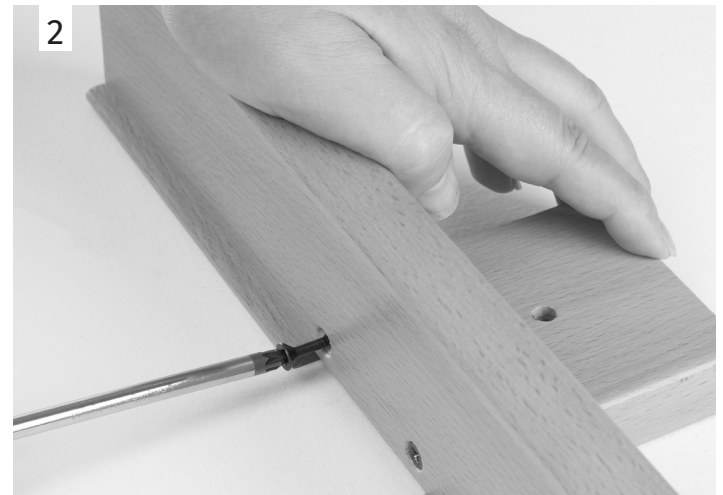
### Hints



### Tools Required

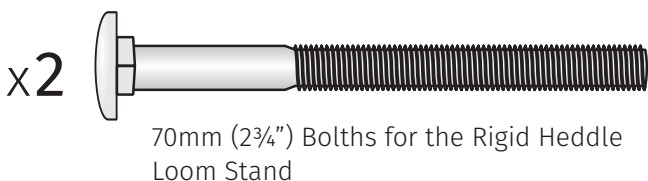
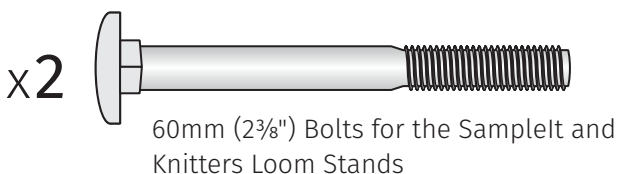
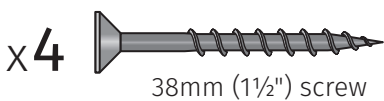


Align the screw holes in a tray with the pilot holes in a base.



Secure the tray to the base with the 38mm (1½") wood screws as illustrated. To make assembly easier use candle wax on the screw threads.

### Real Scale Hardware List



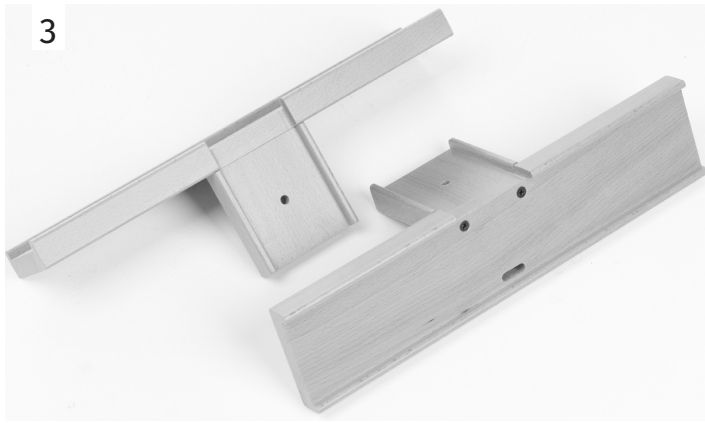
LSAT230226

### Ashford Guarantee

Thank you for purchasing this Ashford product. In the unlikely event of a fault in manufacture, please contact the dealer you purchased it from.

### Ashford Blog

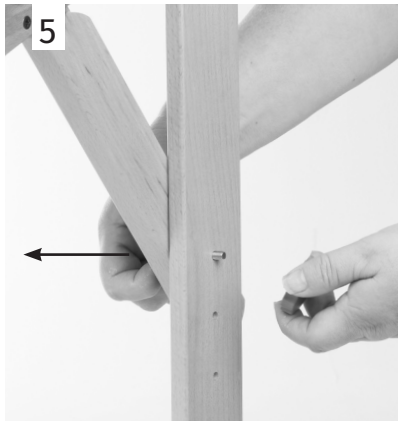
For inspirational articles, patterns and projects. Subscribe for free [www.ashford.co.nz/blog](http://www.ashford.co.nz/blog)



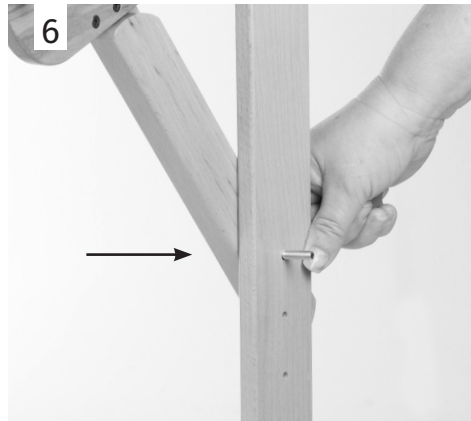
Repeat for the other tray.



If your loom is on the stand, tighten the 4 knobs securing the loom and support braces to the loom stand, so the loom does not move.



Remove the knob and washer securing the support brace on one side only. Remove the bolt from the support brace and side.



Replace it with a new bolt - 60mm (2 $\frac{3}{8}$ "") for the Samplelt and Knitters Loom Stands and the 70mm (2 $\frac{3}{4}$ "") for the Rigid Heddle Loom Stand\*. The square head of the bolt fits into the slot in the support brace.



Position one of the Loom Stand Accessory Trays onto the bolt and loom stand side, and loosely secure with the washer and knob. Reposition the support brace under the loom and tighten the knob. Repeat for the other side.

\* The round wooden spacer must remain in place on the Rigid Heddle Loom Stand.

## More Information



**How-to videos on You Tube**  
Watch our how-to videos on You Tube.  
@AshfordNZ



**Facebook**  
Join us on facebook ashford.wheels.looms



**Blog**  
For inspirational articles, patterns and projects. Subscribe for free to the Ashford Blog [www.ashford.co.nz/blog](http://www.ashford.co.nz/blog)

